



Surtees Drive, Willington, DL15 0GR
4 Bed - House - Detached
£285,000

ROBINSONS
SALES • LETTINGS • AUCTIONS • SURVEYS

Surtees Drive Willington, DL15 0GR

* SUBSTANTIAL FAMILY HOME * MODERN HOUSING DEVELOPMENT * FOUR DOUBLE BEDROOMS * INTERNAL VIEWING HIGHLY RECOMMENDED *

This large four bedroom detached home is beautifully presented throughout and should prove to be a great family home. The property has spacious accommodation throughout with the benefit of four double bedrooms, useful utility room and en-suite shower room. It is located in a modern housing development in Low Willington and is close to schooling and amenities.

The house is in pristine condition throughout with contemporary decoration and flooring, it is warmed by gas central heating and has UPVC double glazed windows.

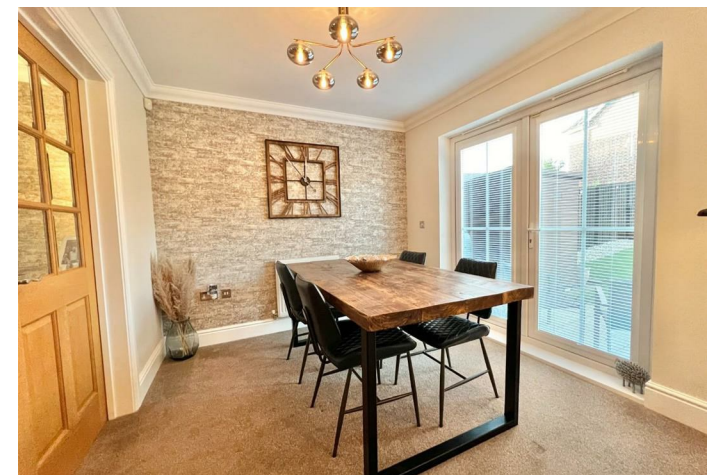
The internal accommodation comprises; welcoming entrance hallway, cloakroom/wc, lounge with bay window to the front aspect and French door opening to the dining room which also has French doors to the garden. A well fitted kitchen with a range of wall, base and drawer units with integrated hob, oven and extractor fan, dishwasher and space for fridge/freezer. Useful utility room with space for washing machine and door giving access to the garage.

To the first floor there are four double bedrooms, the master having a en-suite shower room and fitted wardrobes, bedroom four also having fitted wardrobes and currently being used as a dressing room. Family bathroom with a four piece suite including bath and shower enclosure.

Outside the property has a blocked paved driveway to the front, allowing parking for at least two vehicles. The rear garden is enclosed with gated access and is laid to lawn with patio area.

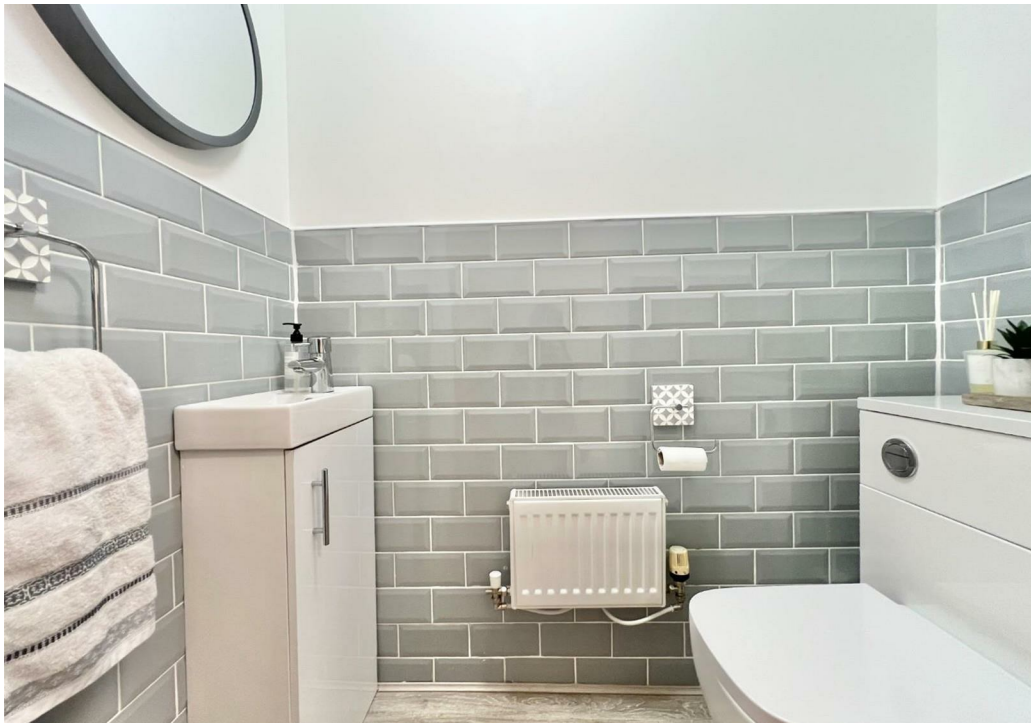
Willington offers primary and secondary schooling, shopping amenities, healthcare facilities and bus links. Low Willington has a cricket club and public house.

We highly recommend an internal viewing to fully appreciate this house, please contact Robinsons to arrange yours.













AGENTS NOTES

Electricity Supply: Mains

Water Supply: Mains

Sewerage: Mains

Heating: Gas central heating

EPC Rating: C

Durham Council Tax Band: E

Annual Price: £2,971

Broadband

Basic

15 Mbps

Superfast

80 Mbps

Ultrafast

9000 Mbps

Mobile Signal: Average/Good

Disclaimer

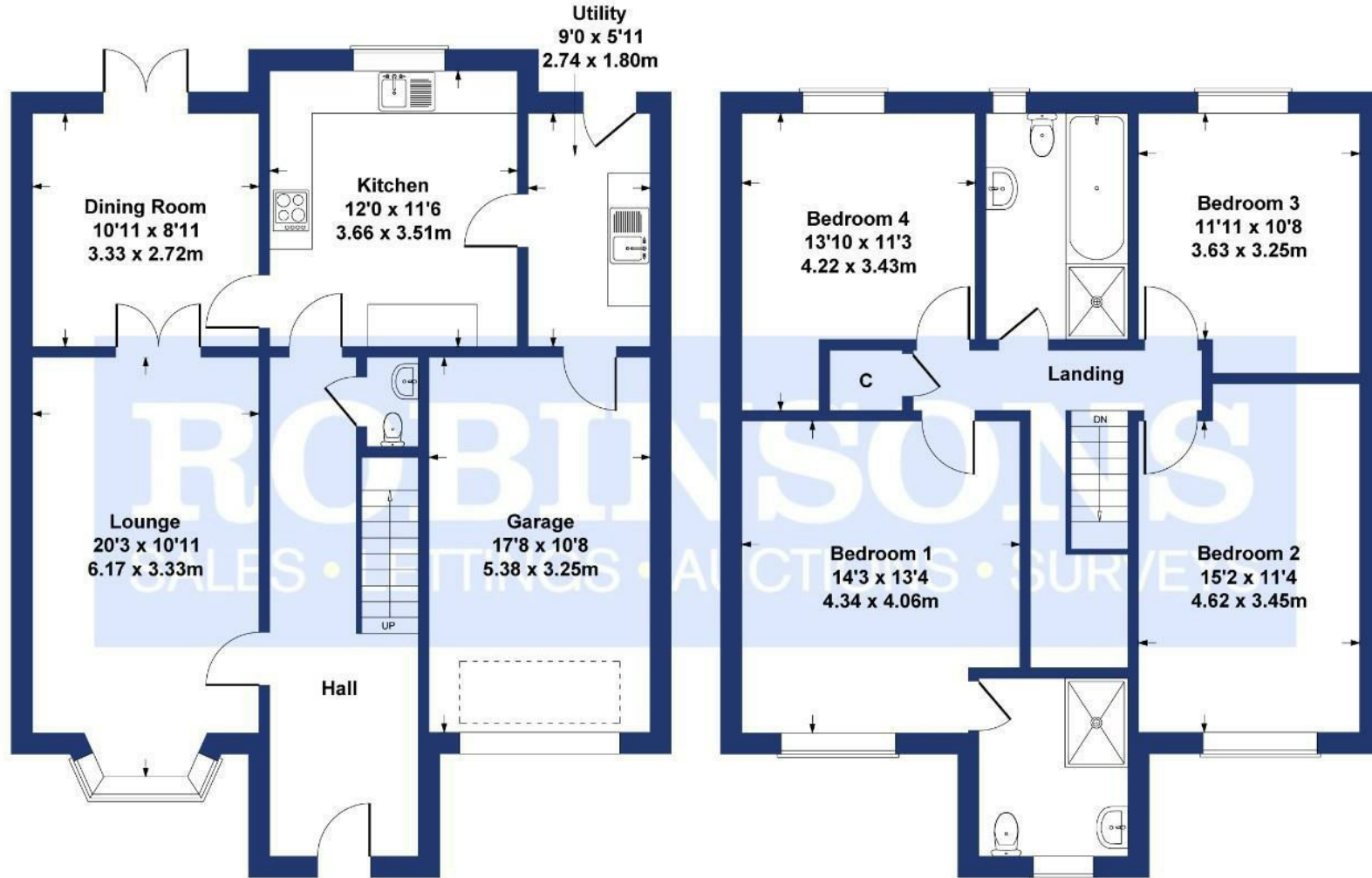
The preceding details have been sourced from the seller and OntheMarket.com. Verification and clarification of this information, along with any further details concerning Material Information parts A, B and C, should be sought from a legal representative or appropriate authorities. Robinsons cannot accept liability for any information provided.





Surtees Drive Willington

Approximate Gross Internal Area
1812 sq ft - 168 sq m



GROUND FLOOR

FIRST FLOOR

SKETCH PLAN FOR ILLUSTRATIVE PURPOSES ONLY

All measurements walls, doors, windows, fittings and appliances, their sizes and locations, are approximate only. They cannot be regarded as being a representation by the seller, nor their agent.

Produced by Potterplans Ltd. 2024

Energy Efficiency Rating		Current	Potential
<i>Very energy efficient - lower running costs</i>			
(82 plus)	A		82
(81-81)	B		
(69-80)	C	74	
(55-68)	D		
(39-54)	E		
(21-38)	F		
(1-20)	G		
<i>Not energy efficient - higher running costs</i>			
England & Wales		EU Directive 2002/91/EC	

For clarification we wish to inform prospective purchasers that we have prepared these sales particulars as a general guide. We have not carried out a detailed survey, nor tested the services, appliances and specific fittings. Room sizes should not be relied upon for carpets and furnishings, if there are important matters which are likely to affect your decision to buy, please contact us before viewing the property. Robinsons can recommend financial services, surveying and conveyancing services to sellers and buyers. Robinsons staff may benefit from referral incentives relating to these services.



Royal Corner, Crook, County Durham, DL15 9UA
Tel: 01388763477
info@robinsonscrook.co.uk
www.robinsonsestateagents.co.uk

